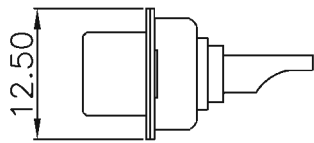
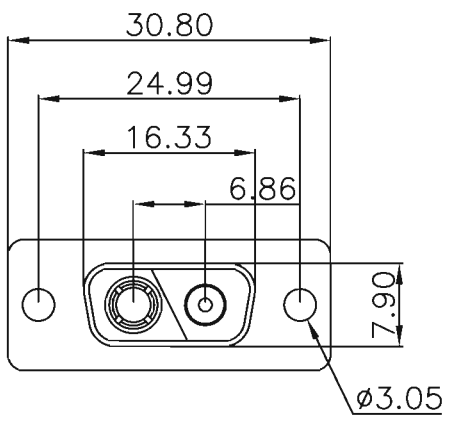
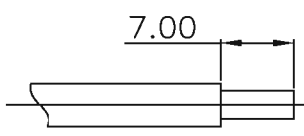
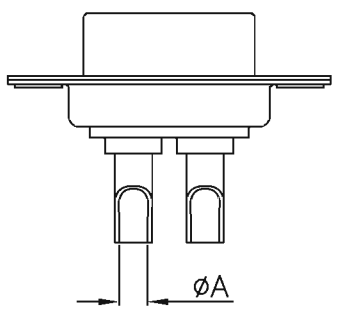


DATE	REV	DESCRIPTION	DATE	APPROVED



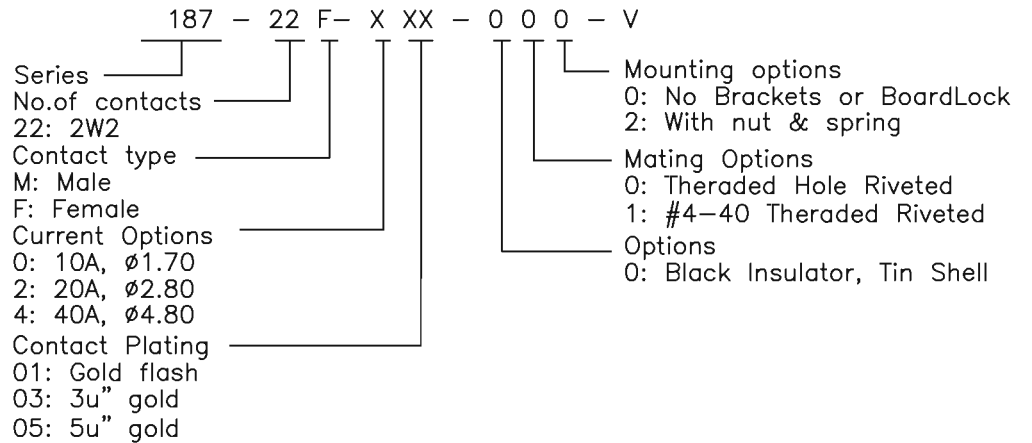
MATERIALS AND FINISH
 SHELL : STEEL MATERIAL, TIN FINISHED
 CONNECTOR INSULATOR : PBT THERMOPLASTIC,
 30% GLASS FILLED, UL 94V-0 RATED, BLACK COLOR
 HIGH POWER CONTACT MATERIAL: BRASS, 15u" GOLD PLATED

ELECTRICAL CHARACTERISTICS
 HIGH POWER CONTACT CURRENT RATING :10,20,OR 40 AMPS
 HIGH POWER CONTACT RESISTANCE : 2.7 MILLIOHMS MAX.
 DIELECTRIC WITHSTANDING VOLTAGE :
 1000 V AC FOR 1 MINUTE
 INSULATION RESISTANCE : 5000 MEGAOHMS MIN.
 TEMPERATURE RATING : -55°C ~ +125°C



Cable

HOW TO ORDER



PART NO.	Current Rating	Dimension	Wire Size
		ϕA	
187-22F-405-000-V	40 AMPS	$\phi 4.8$	AWG8-10
187-22F-205-000-V	20 AMPS	$\phi 2.8$	AWG12-14
187-22F-005-000-V	10 AMPS	$\phi 1.7$	AWG16-20

TORERANCE	Drawn	Lucy Liu	10.09.01
.X ± 0.38	Designed	Lucy Liu	10.09.01
.XX ± 0.25	Approved	Raoul	10.09.01
.XXX ± 0.15	D-sub High Power		
Angles+\-5°	2V2F Solder Machine Pin		
Ver A0	TITLE		

ADAMICU®
 东莞市亚当电子科技有限公司
 Adam Electronic Technology Co.,Ltd

SHEET 1/1	Scale: 1:1		RoHS
-----------	------------	--	-------------

Part No. 187-22F-XXX-012-V